

will advance ASU as a world-class university

in the top 5 with



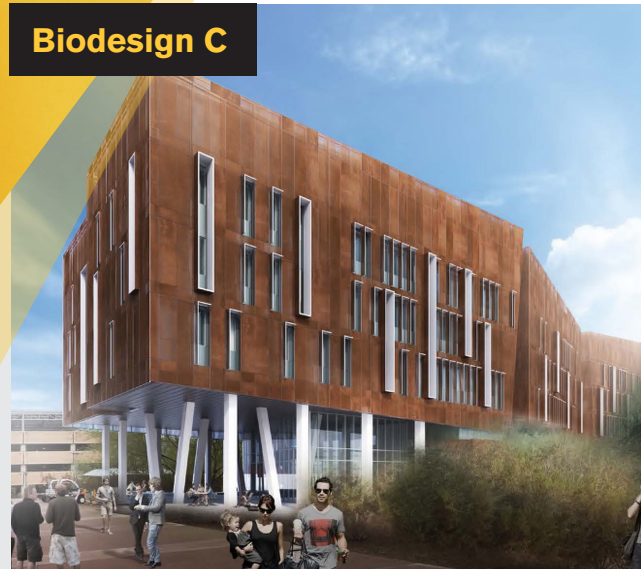
Massachusetts
Institute of
Technology



Path forward

- exceed **\$800 million** in annual research
- launch over **200 startups**
- attract over **\$1 billion** in venture funding

Biodesign C



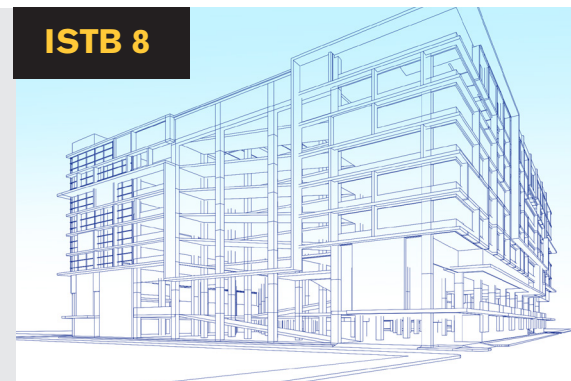
5 new research centers including world-renowned **ASU-Banner Neurodegenerative Disease Research Center**, to study Alzheimer's, Parkinson's and other dementias

ISTB 7



- **Julie Ann Wrigley Global Institute of Sustainability**
- New **School for the Future of Innovation and Society**

ISTB 8



Anchor for the **ASU Downtown Biomedical Campus**, a major research and innovation generator

research.asu.edu

Research Infrastructure Investment

propelling growth and positioning Arizona for global competitiveness



advanced ASU to an American-class university

ahead of Carnegie Mellon University Caltech PRINCETON UNIVERSITY

Entrepreneurship and Innovation

100 companies have launched based on ASU innovations, attracting more than **\$600 million** in external investment.

HealthTell, founded by ASU Biodesign Institute researchers, has raised **\$40 million** in funding.



Student entrepreneurs launched NeoLight, a low-cost, energy-efficient device to cure infant jaundice.

From 2004 to 2016:

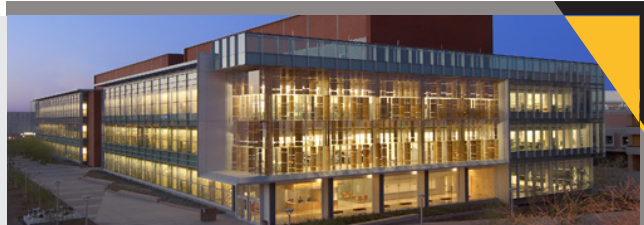
- **2,500 invention disclosures**
- **405 U.S. patents**
- more than **\$35 million** in license and options income

#1 in the U.S. for innovation

#1 ASU #2 Stanford #3 MIT
-U.S. News & World Report, 2016 and 2017



Economic Expansion



Biosciences industry in Arizona

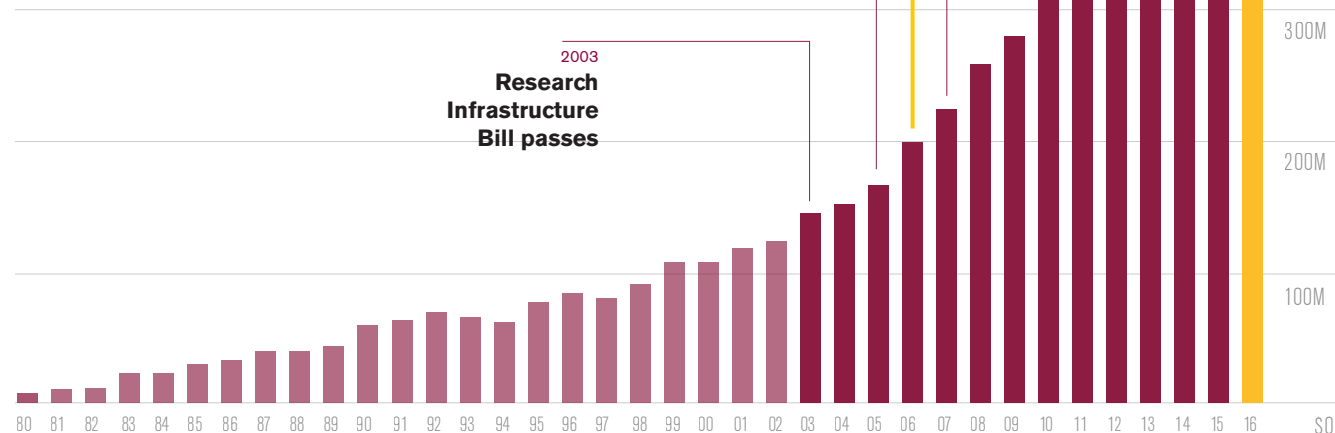
Over a decade:

- **jobs** increased by **45%**
- **firms** increased by 31% to **892**
- **salaries** are **28%** higher than the average private sector salary

ASU ranks top 10 in the U.S. for NIH-funded research expenditures among institutions without a medical school.

At ASU:

- **55%** increase in **bioscience R&D expenditures**
- **180 patents**
- **67 spinout companies**



Corporate Engagement



"Intel hires more graduates out of ASU than any other university. They demonstrate an ability to be critical thinkers, to problem solve, to think logically and give us a fresh look at some of the issues and challenges that we're facing." – Jason Bagley, Government Affairs Manager

Infusionsoft.

"Having a pipeline of qualified workers that are able to come in from ASU is helping us meet our goals."

– Anita Grantham, Vice President

Research Impact



Interdisciplinary Science and Technology Building (ISTB) 4

ASU is 1 of only 7 institutions in the U.S. that can **build interplanetary spacecraft**.



#3 in the U.S. for Earth sciences research expenditures, ahead of

Stanford University MIT Massachusetts Institute of Technology Berkeley University of California

NASA selected ASU to lead a \$450 million mission to explore the asteroid Psyche.

#11 in the U.S. for NASA-funded expenditures, ahead of

Stanford University Georgia Tech TEXAS The University of Texas at Austin

ASU's Total Research Expenditures 1980-2016

more than \$4 billion since 2004