

# Arizona State University Accomplishments

Spring 2018



**“You never change things by fighting the existing reality. To change something, **build a new model** that makes the existing model obsolete.”**

- Buckminster Fuller

# ASU Charter

ASU is a comprehensive public research university, measured not by whom it excludes, but by whom it **includes** and how they **succeed**; advancing research and discovery of **public value**; and assuming **fundamental responsibility** for the **economic, social, cultural, and overall health** of the communities it serves.



# #1 in the U.S. for innovation

#1 ASU #2 Stanford #3 MIT

- U.S. News & World Report 2016, 2017, 2018



Ahead of Carnegie Mellon, Northeastern,  
Harvard, Duke, Georgia Tech, Purdue, Cornell,  
USC, UT-Austin and Yale



ASU in 1988

## Underperforming Public Agency Model

High State Investment

**\$9,770\*** per FTE student

No Budget for Improvement

**\$415 million**

Inadequate Student Outcomes

**14.2%** four-year graduation rate

\* = 2017 Dollars



ASU in 1988

## Underperforming Public Agency Model

### Low Price and Low Aid

**\$2,577\*** resident undergraduate  
tuition and fees

**<3%** undergraduates received  
Pell Grants

### Low Freshman Diversity

**84.9%** White

**9.9%** underrepresented minority

### Small Contribution to Knowledge Generation

**\$39 million**

in annual research expenditures

\* = 2017 Dollars



# \$39 million

in annual research expenditures

4 Wisconsin – Madison  
9 UCLA  
13 Washington – Seattle  
17 Texas – Austin  
23 Ohio State

69 Hawai'i – Mānoa  
71 New Mexico State  
80 Oklahoma State  
94 Mississippi State  
105 Arizona State University



## ASU Charter

ASU is a **comprehensive public research university**, measured not by whom it excludes, but by **whom it includes** and how they **succeed**; advancing **research and discovery** of public value; and assuming **fundamental responsibility** for the economic, social, cultural and overall health of the **communities** it serves.



ASU in 2018

## Established Public Enterprise Model

Low State Investment

**\$3,141** per FTE student

Budget for Consistent Growth and Quality

**\$3.1 billion**

High Student Outcomes

**50%** four-year graduation rate  
**71%** for A-students and **46%** for B-students



ASU in 2018

## Established Public Enterprise Model

Medium Price and High Aid

**\$10,792** resident undergraduate  
tuition and fees

**34.2%** undergraduates received  
Pell Grants

High Freshman Class Diversity

**50/50** freshman class diversity

Large Contribution  
to Knowledge Generation

**\$545 million**

in annual research expenditures



# Education

## 18 leading edge, transdisciplinary schools

School of Earth and Space Exploration

School for the Future of Innovation in Society

School of Civic and Economic Thought Leadership



# ASU launches its newest transdisciplinary school



**The Federalist**

The Federalist was written to help get the Constitution ratified. It is a series of essays written by James Madison, Alexander Hamilton, and John Jay. The essays discuss the benefits of the new government and the dangers of the old one.

The project was completed by Alexander Hamilton and James Madison. It was published in 1787-1788. The essays were written in the form of letters to the public. The essays were published in the New York Journal and the New York Packet.

George Washington on Signing the Constitution

When the brilliant circumstances & English performance which attended the crisis were have disappeared, The Federalist will merit the praise of history because in it we can find the principles of government, which are the basis of our government, which are the basis of our government, as long as they shall be connected to Civil Society.

ASU

**The Federalist**

**Number One (Alexander Hamilton)**

It has been frequently remarked, that it seems scarcely to have been reserved to the people of this country by their conduct and interests to decide on a question, which is so essential to their peace and safety. It is not possible to avoid a decision on whether they are forever desirous to depend on a government, which is so essential to their peace and safety, or whether they are forever desirous to depend on a government, which is so essential to their peace and safety.

**Number Fifty-One (James Madison)**

A federalist must be made to correct the situation of the country. It is not possible to avoid a decision on whether they are forever desirous to depend on a government, which is so essential to their peace and safety, or whether they are forever desirous to depend on a government, which is so essential to their peace and safety.

ASU

# Education

## World-class faculty

---

**5** Nobel Laureates

**6** Pulitzer Prize winners

**3** MacArthur Fellows

**Top 10** Producer of Fulbright Scholars



ASU becomes one of only four schools in the nation to boast **Fulbright, Rhodes, Marshall** and **Churchill** scholars



# Education

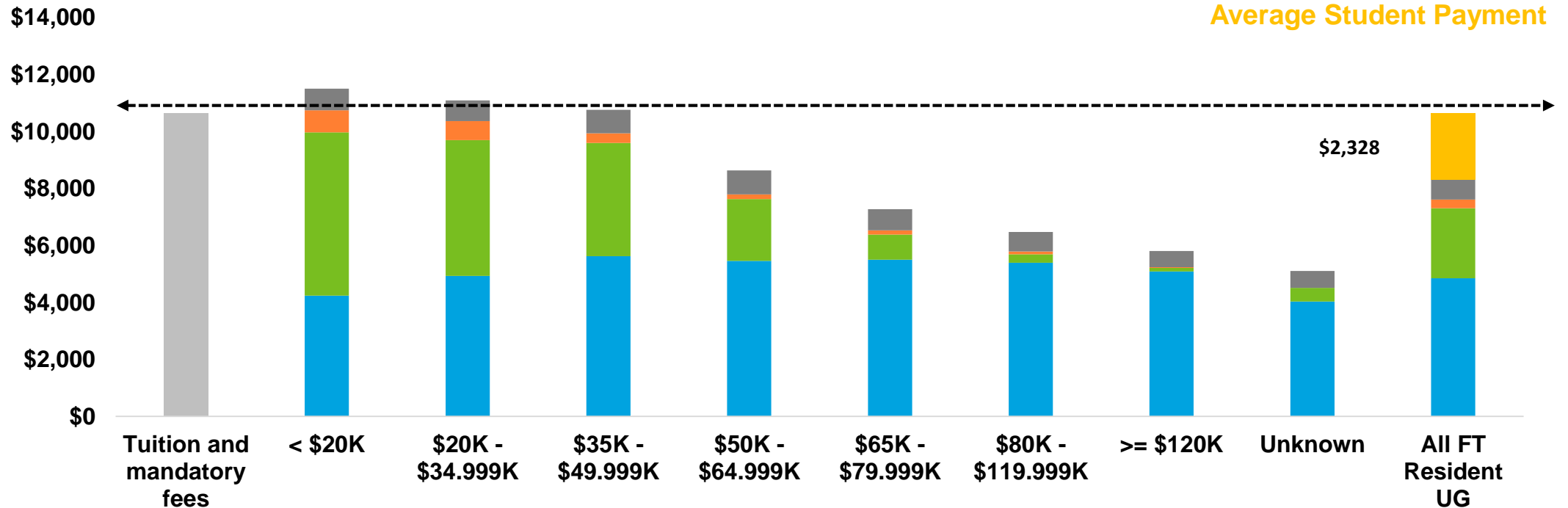
**\$2,200 per year**

**Net tuition paid** (after grants, gift aid and tuition benefits, no loans) **for resident students**



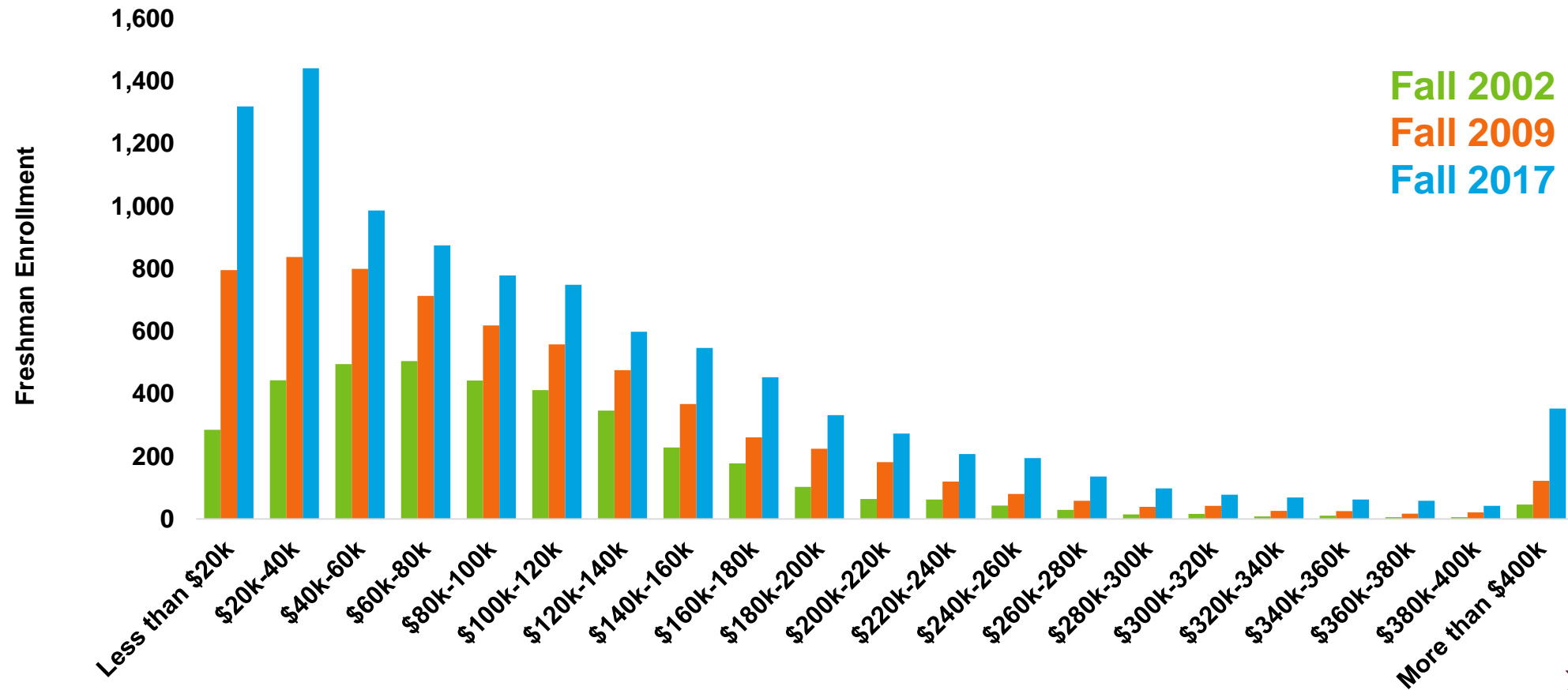
# Arizona Resident Undergraduates in 2016-17 Average Gift Aid Awards by Family Income

Tuition & Mandatory Fees  
 Institutional Gift Aid  
 Federal Gift Aid  
 State Gift Aid  
 Private/External Gift Aid  
 Average Student Payment





# ASU First-Time Full-Time Freshmen Enrollment by Adjusted Family Income



# Education

**#1**

**public university for  
international students**

Ahead of University of Illinois, UCLA,  
Michigan State



# Research

**Fastest-growing  
research university  
in the U.S.**



# \$545 million

in annual research expenditures

8	Wisconsin – Madison	28	UCLA
12	Washington – Seattle	51	Hawai'i – Mānoa
14	Texas – Austin	60	Mississippi State
22	Arizona State University	79	Oklahoma State
26	Ohio State	114	New Mexico State

### Anthropology

---

1<sup>st</sup>

**Ahead of:**  
University of Michigan  
Harvard University  
Stanford University

### Geological and Earth Sciences

---

2<sup>nd</sup>

**Ahead of:**  
Stanford University  
MIT  
PennState  
University of Michigan

### Social Sciences

---

4<sup>th</sup>

**Ahead of:**  
Berkeley  
Cornell University  
UCLA  
University of Pennsylvania

### State Graduate Debt

---

46<sup>th</sup>

**Less debt than:**  
Delaware  
Minnesota  
Connecticut  
Pennsylvania

### Humanities

---

4<sup>th</sup>

**Ahead of:**  
Yale  
Harvard University  
Princeton University  
Columbia University

### Political Science

---

5<sup>th</sup>

**Ahead of:**  
Berkeley  
PennState  
Duke University

### Electrical, Electronic, and Communications Engineering

---

7<sup>th</sup>

**Ahead of:**  
Stanford University  
Carnegie Mellon University  
MIT

### 10 Year Production Fulbright Student Awards

---

9<sup>th</sup>

**Ahead of:**  
Stanford University  
Princeton  
University of Texas at Austin

### Non-Science and Engineering

---

7<sup>th</sup>

**Ahead of:**  
Stanford University  
University of Texas at Austin  
Columbia University  
Harvard University

### HHS (including NIH) Funded Expenditures among Institutions without a Medical School:

---

9<sup>th</sup>

**Ahead of:**  
Princeton University  
Georgia Tech  
Carnegie Mellon University

### Political Science

---

10<sup>th</sup>

**Ahead of:**  
Stanford University  
Georgia Tech  
UCLA  
Columbia University

### Engineering

---

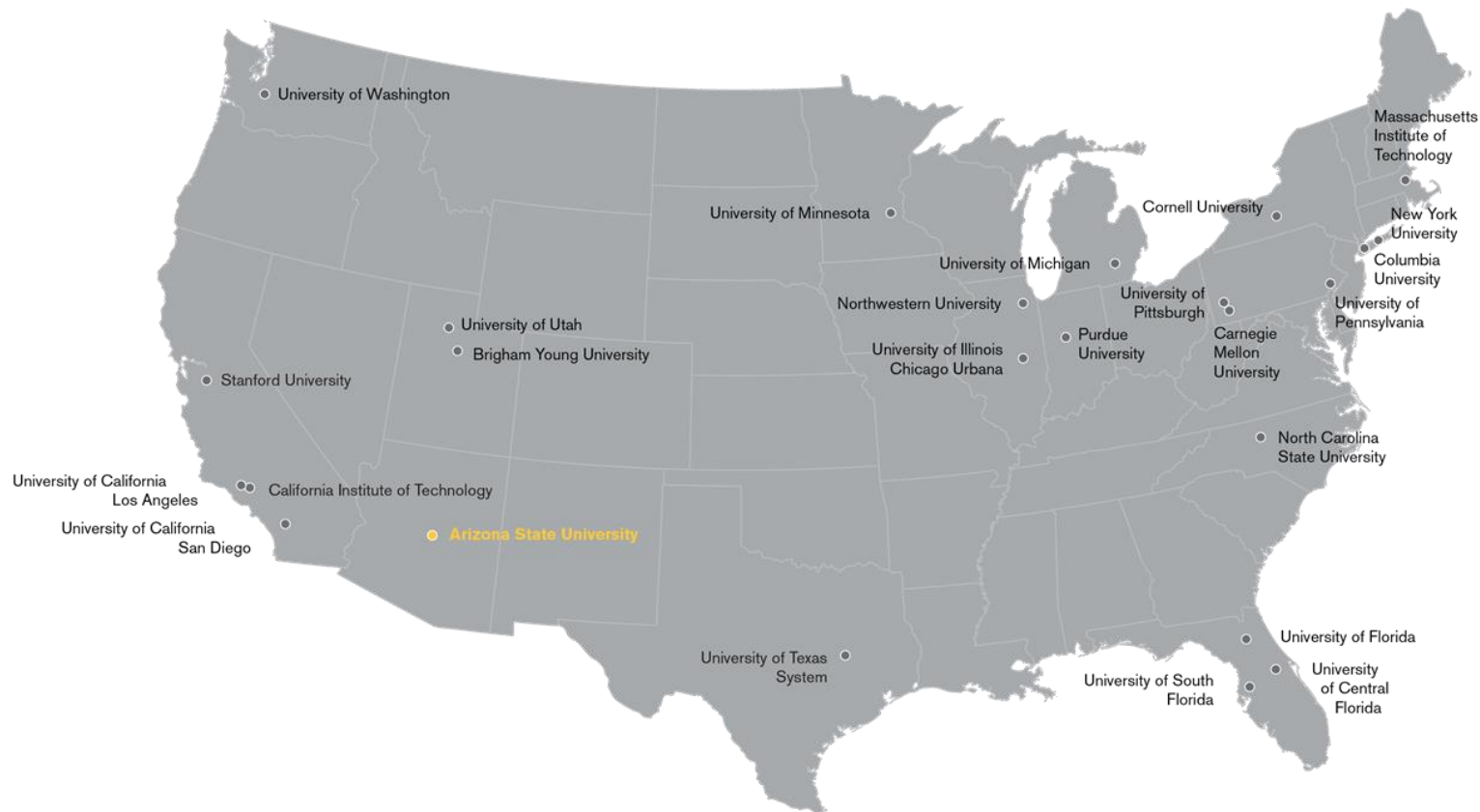
19<sup>th</sup>

**Ahead of:**  
Cornell University  
Caltech  
Carnegie Mellon University  
Stanford University

# Top 25 in the U.S. for technology transfer and commercialization

ahead of Harvard, Johns Hopkins, USC and Duke

- *The Best Universities for Technology Transfer 2017, Milken Institute*



## Technology Transfer

**110**

**spinout companies  
have launched based  
on ASU innovations,  
attracting \$650M in  
funding**

**Innovation Open**

February 2, 2018



**IVNET**  
Reach Further™

0001

Date *February 2, 2018*

Pay to the order of *Hoolest Performance Technologies*

*One Hundred Thousand* **\$100,000** Dollars

The 2018 ASU Innovation Open is powered by:

**IVNET** **ASU Engineering**  
Arizona State University

ASU Innovation Open





# Changemaker Challenge



## changemaker challenge

Are you dedicated to making a local or global difference through innovation?

win up to \$10,000!





**A unit of the Arizona State University Knowledge Enterprise**



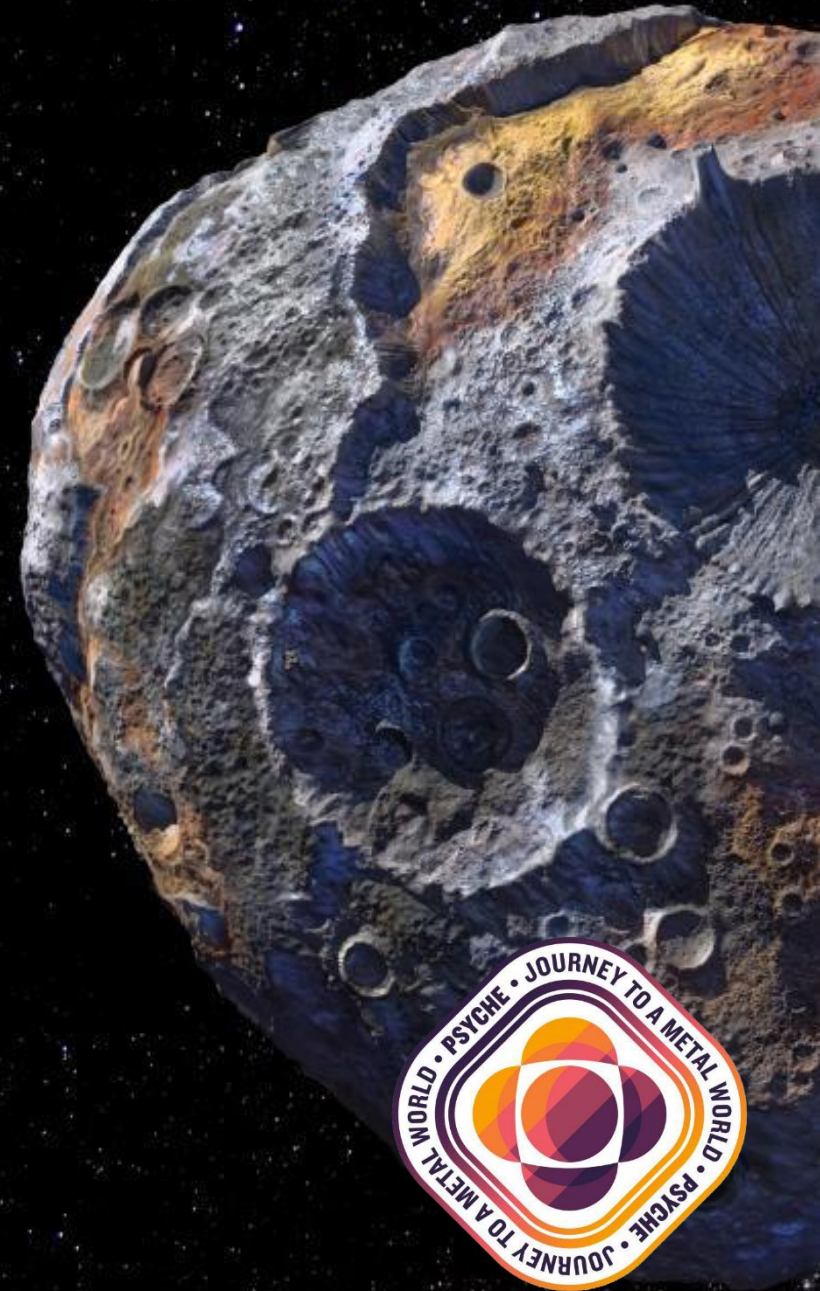
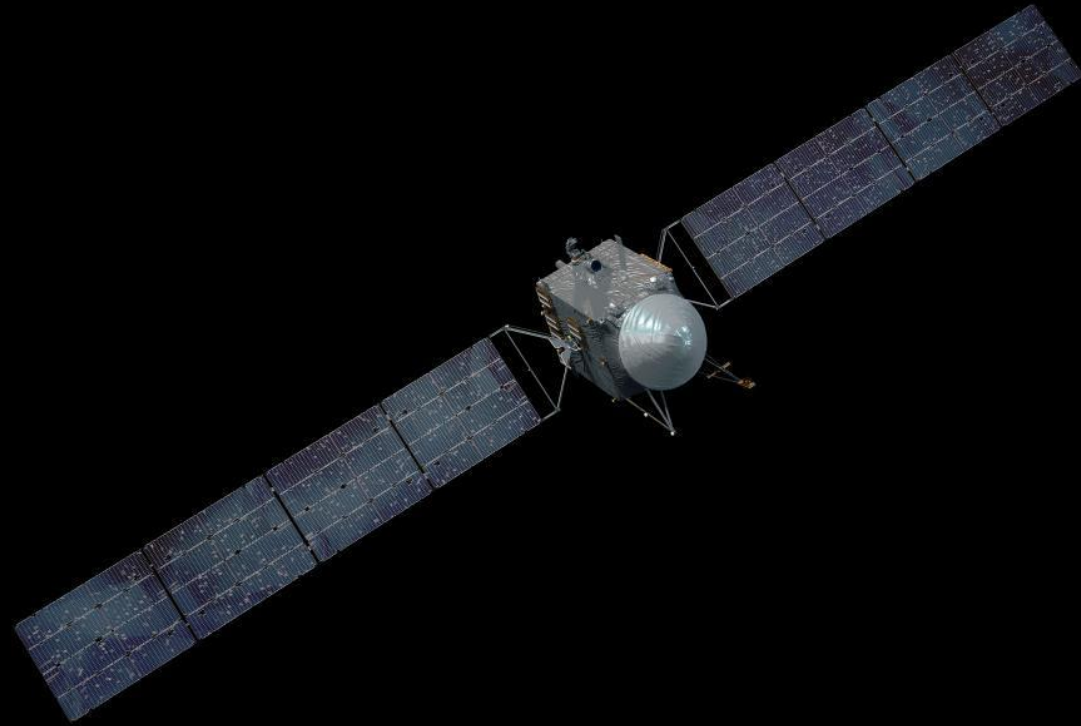
# Research

**#11** in NASA-funded  
expenditures

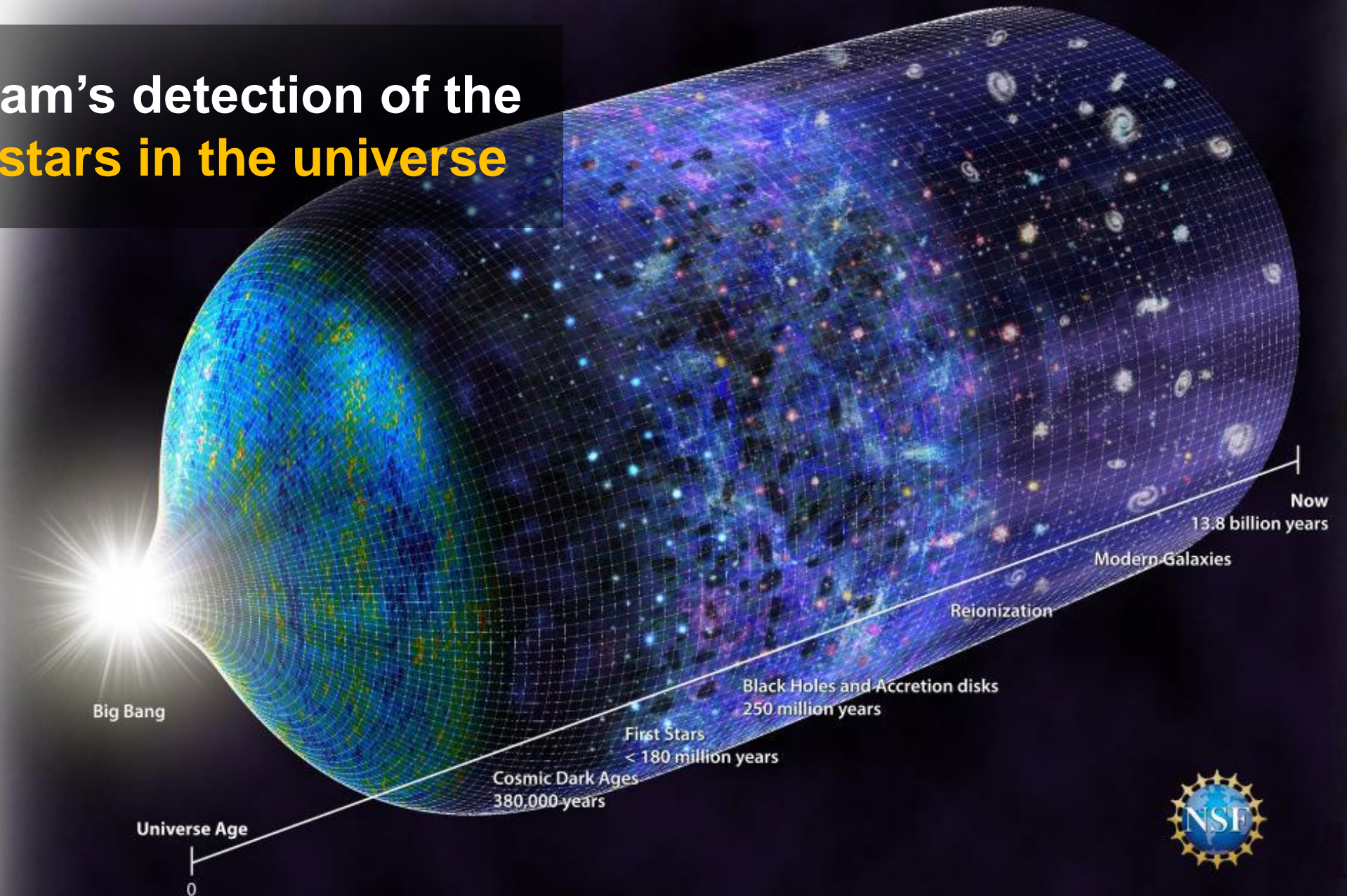
Ahead of Stanford, UCLA, UT Austin,  
Georgia Tech



# First ASU-led NASA deep-space mission to Psyche



# SESE team's detection of the earliest stars in the universe



# Research

**Mayo Clinic ASU Alliance for Health Care** accelerates research, improves patient care, and transforms medical education



Mayo Clinic

Mayo Clinic

School of Medicine

# Mayo Clinic School of Medicine welcomes 1<sup>st</sup> cohort of students in Scottsdale



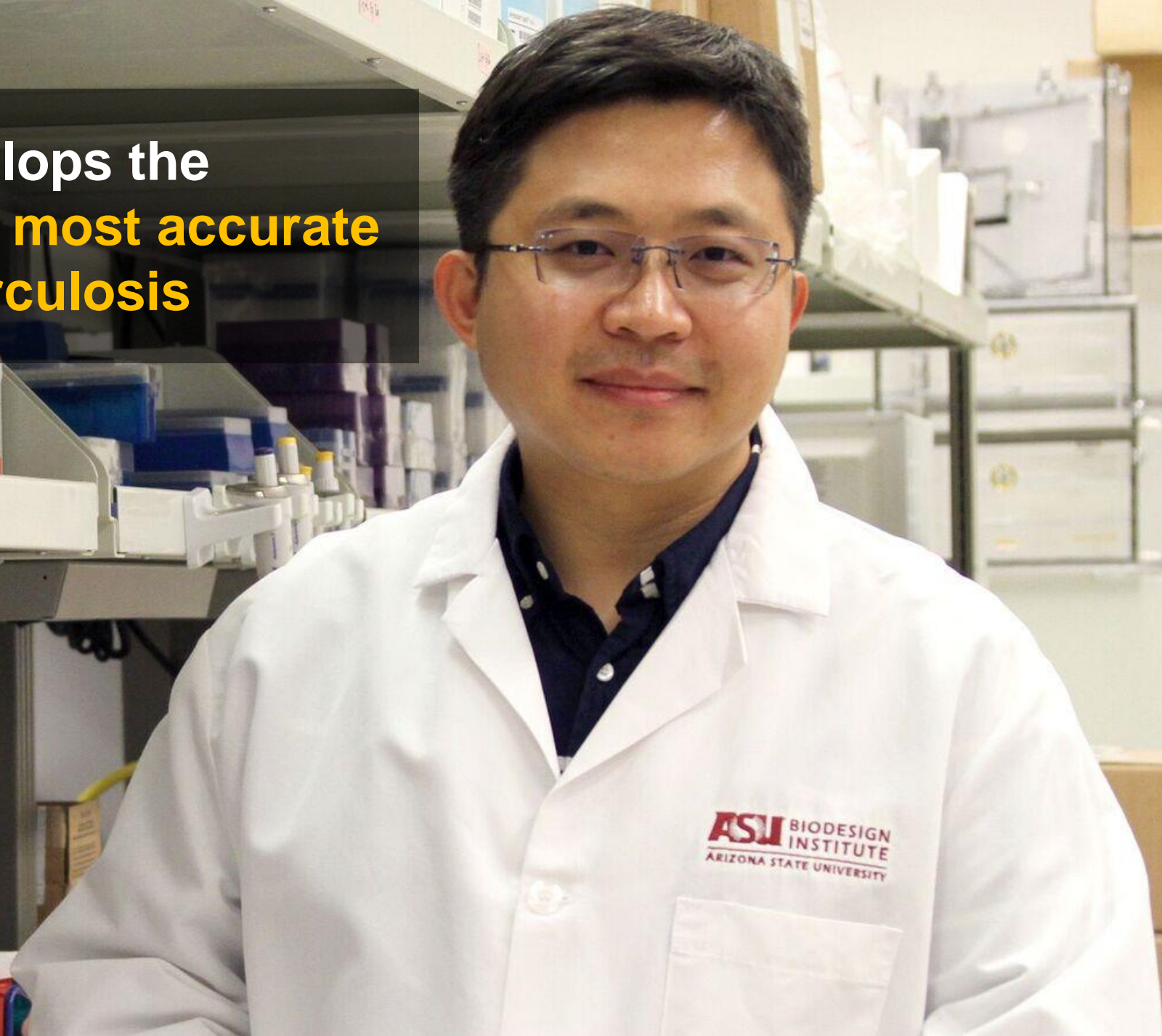
# Research

**PLuS Alliance** with King's College and the University of New South Wales advances research to **solve global challenges and expand access to quality learning**





ASU research develops the  
**world's fastest and most accurate**  
**blood test for tuberculosis**



A close-up photograph of a person's hands. The person is holding a white lancet in their right hand and is pricking the tip of their left index finger. A small drop of blood is visible on the finger. The background is a soft, out-of-focus light color, possibly a window with blinds. A dark grey semi-transparent box is overlaid on the left side of the image, containing white and yellow text.

ImmunoSignature diagnostic  
platform **leads revolutionary**  
**approach to personalized health**  
**care**

ASU in 2025

## Public Enterprise Model Metric Targets

Total Enrollment

**125,000**

immersion and online students

Total Degrees

**32,000** degrees conferred

Total Degrees

**15,000**

STEM, education and  
health profession degrees

Research Expenditures

**\$815** million

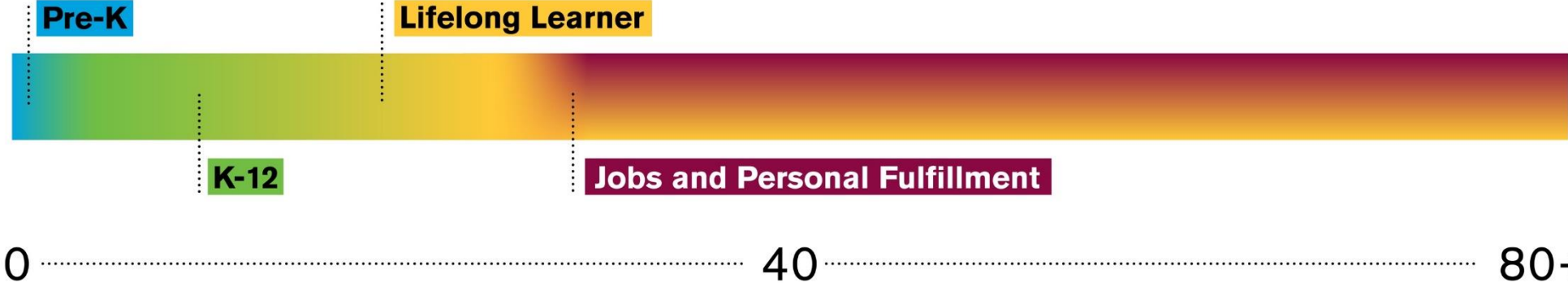


# 2018: Distinct Life Stages



0 ..... 40 ..... 80+  
age

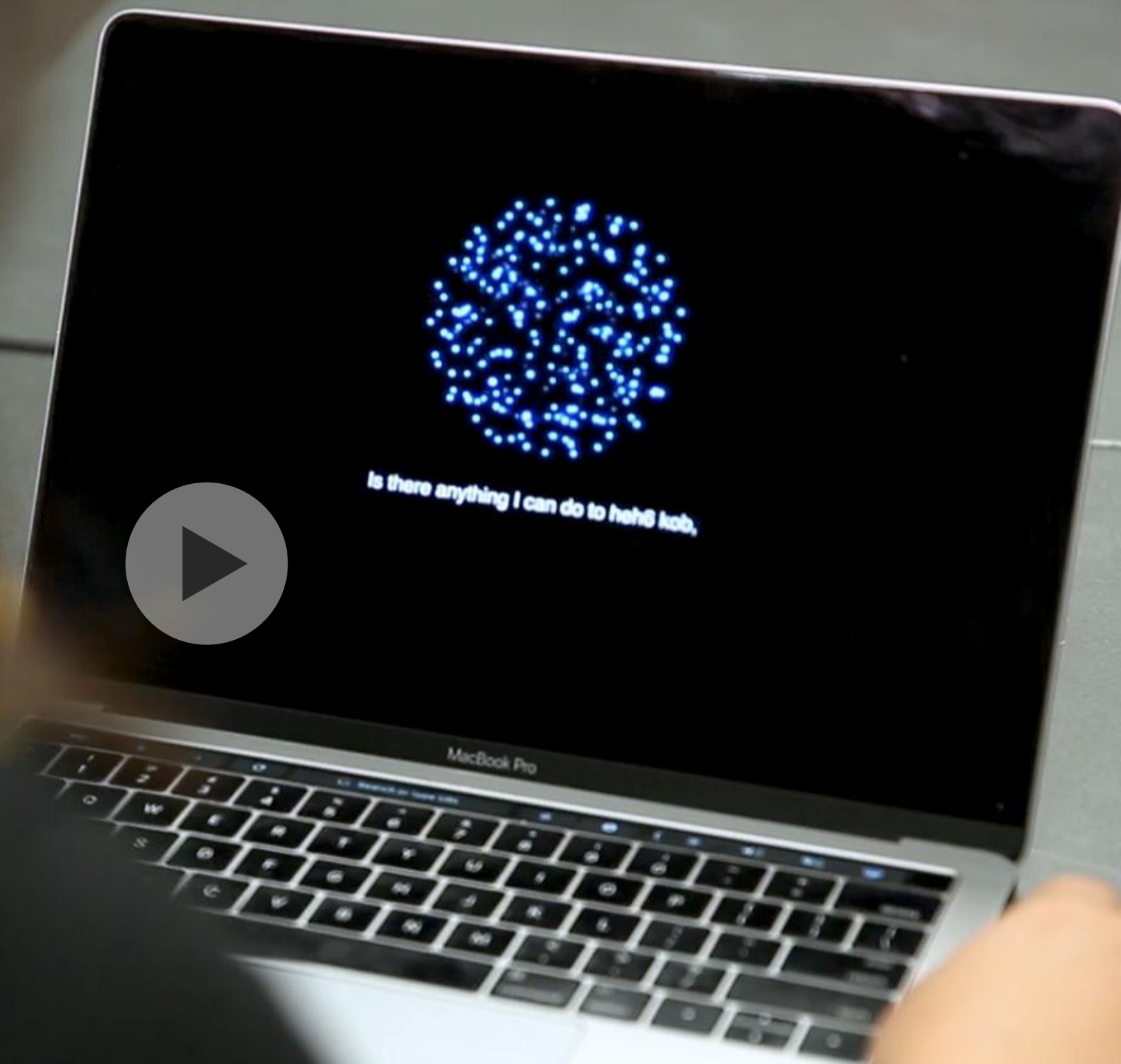
# Future: Universal Learning



# **Universal Learning at ASU**

**Evolving a model capable of being of service to all learners, at all stages of work and learning, from all socioeconomic backgrounds, through educational, training, and skill-building opportunities**

# ASU Luminosity Lab



 [facebook.com/presidentcrow](https://facebook.com/presidentcrow)

 [@asuprescrow](https://instagram.com/asuprescrow)

 [@michaelcrow](https://twitter.com/michaelcrow)



